

# Quick guide: How to change settings on the Fronius Datamanager\*

---

\*Fronius Datamanager V1.0, V2.0 and Datamanager Box V2.0

## White Paper

© Fronius Australia Pty Ltd., VH

Version 1.0/2015

Fronius reserves all rights, in particular rights of reproduction, distribution and translation.

No part of this work may be reproduced in any way without the written consent of Fronius. It must not be saved, edited, reproduced or distributed using any electrical or electronic system.

You are hereby reminded that the information published in this document, despite exercising the greatest of care in its preparation, is subject to change and that neither the author nor Fronius can accept any legal liability

Gender-specific wording refers equally to female and male form.

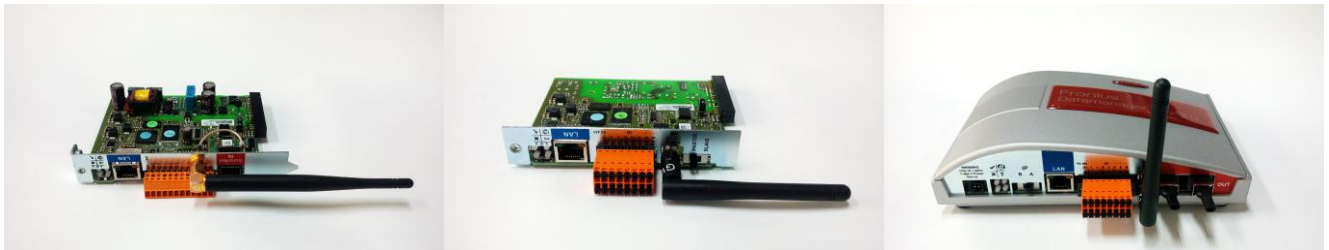
## 1 GENERAL

The Fronius Datamanager is a multi-function card that comes in-built with the inverter or can be retrofitted into an 'older' inverters like the Fronius CL, IG or IG Plus units.

The functions are:

- Datalogging
- Internet connection via WiFi or LAN cable
- WiFi hotspot \*\*
- Export Limitation and Power control via ripple control receiver
- Energy Management relay function
- Integration of an energy meter (Fronius Smart Meter)
- Integration of sensors / the Fronius Sensor Box
- Exchange or export data via Modbus TCP, JSON, data push service
- Modbus RTU/RS485\*\* interface

There are different versions of Datamanagers: Version 1, 2 and the box version 2.



(Diagram 1: f.l.t.r: Datamanager card V1, Datamanager card V2, Datamanager Box V2)

The Datamanager comes with a webserver built-in that allows to change settings using the Fronius Solar Web App (smart phone app for Apple or Android platform) or a web browser.

### 1.1 Going to the Datamanager's web interface

All settings can be changed on the Datamanager's web interface. To access the web interface follow the steps:

#### / Activate the WiFi hotspot\*\*

This can be done on the Datamanager card via the inverter's display (applies to Galvo, Primo, Symo and Eco inverter).

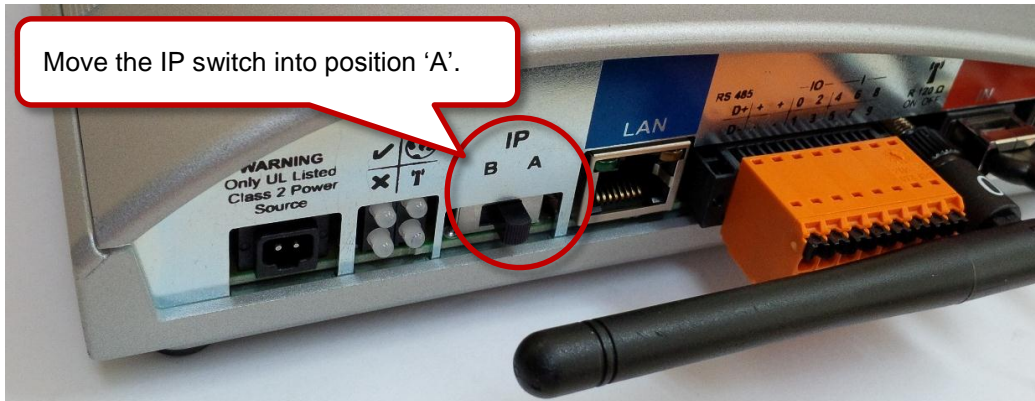
Go to the 'SETUP' menu – 'WiFi Access Point' – 'Activate WiFi AP?'



(Diagram 2: inverter display\*\*)

\*\* Datamanager V2.0 only

For the Datamanager Box V2 just move the IP switch on the Box to position 'A' to activate the WiFi hotspot.



(Diagram 3: Datamanager Box V2)

**/ Or make a wired LAN connection**

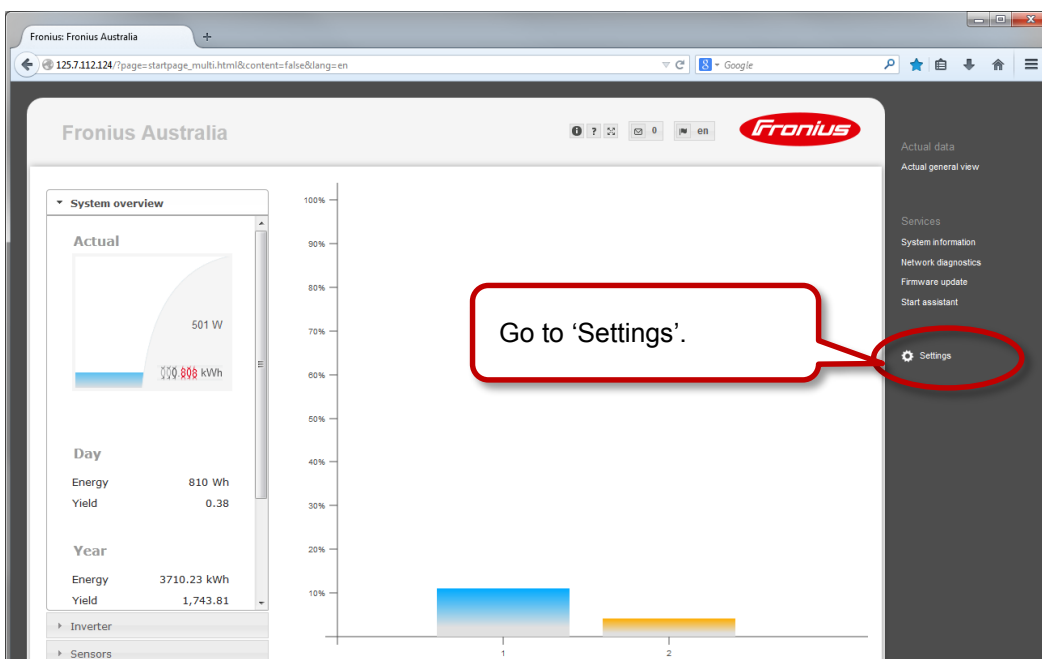
To connect a version 1 Datamanager or as an alternative to the WiFi hotspot\*\* a normal LAN cable (cat 5 or 6) can be used to connect the Ethernet connection of a laptop and the Datamanager.

**/ Open the Datamanager Web Interface**

Therefore connect your computer/tablet/smart phone to the Datamanager's WiFi hotspot, open a web browser and go directly to <http://192.168.250.181> (for WiFi\*\*) or <http://datamanager/>. For a direct wired LAN connection use <http://169.254.0.180>.

Alternatively you can use Fronius SolarWeb App for tablet or smart phone and go to the '**Settings**' on the smart phone app and select '**PV Inverter Homepage**' (Apple devices) or '**Your System Monitoring**' (Android devices).

(If there are multiple Datamanager in your LAN select the correct one according to the ID shown on the inverter display under the name of the inverters WiFi access point SSID).

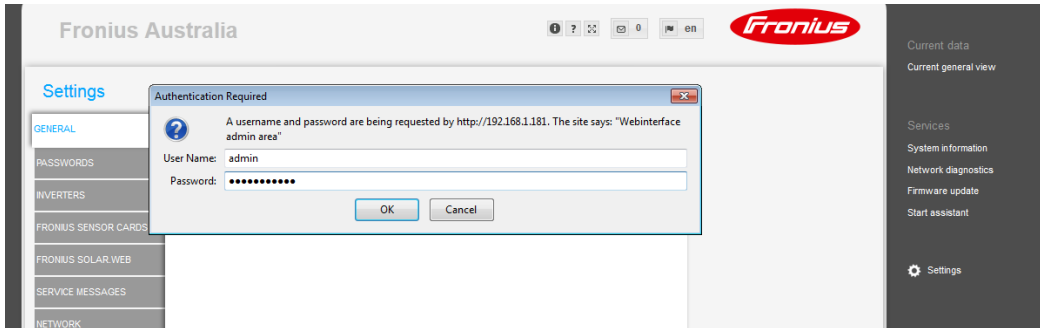


(Diagram 4: Datamanager web interface)

\*\* Datamanager V2.0 only

### / Username and password required

The Datamanager settings are password protected. To enter type in username (usually 'admin') and the password that has been chosen initially at installation.

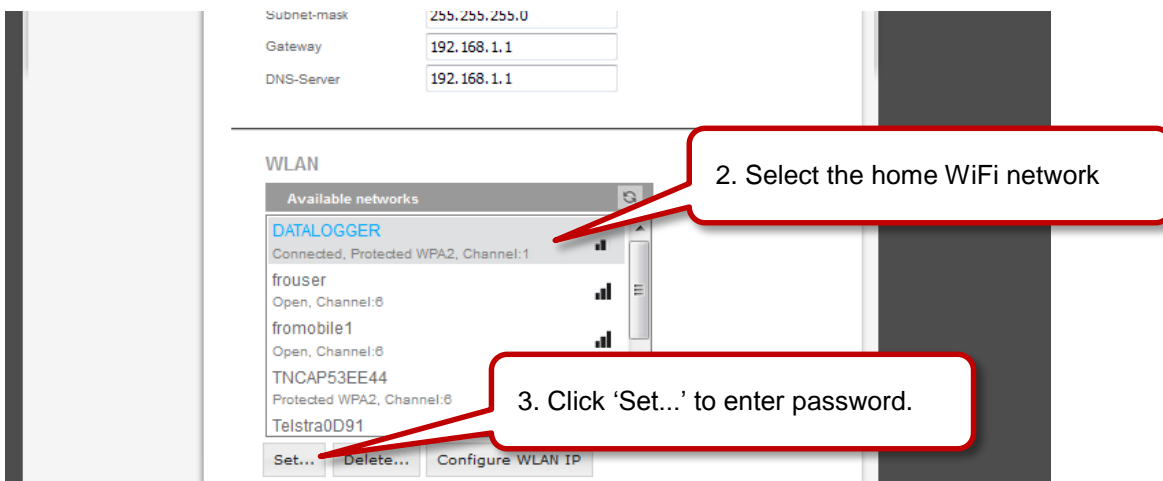


## 1.2 Change the WiFi network

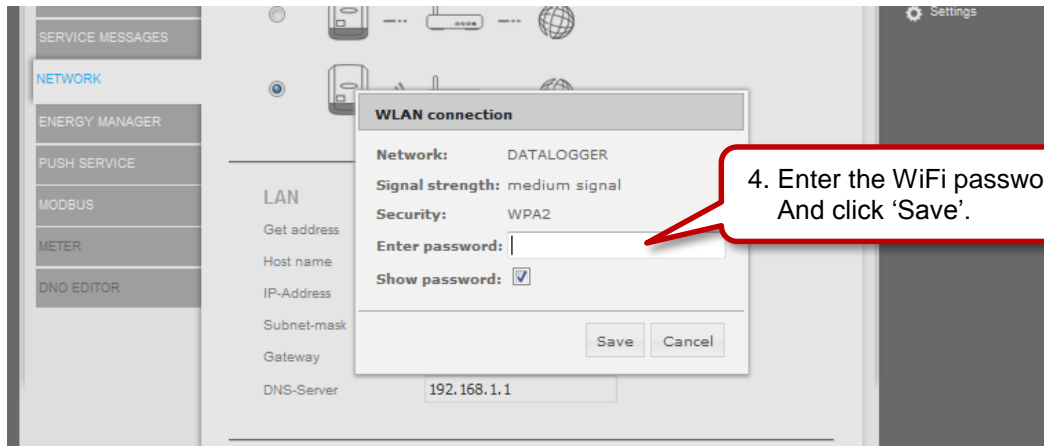
If the internet connection has been changed the network settings can be adapted on the 'Settings' page. Therefore go to *NETWORK* as show in the picture below.



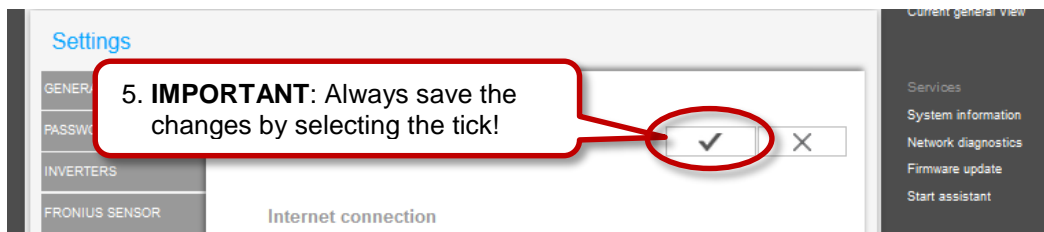
/ Then select the new WiFi network and enter the password under 'Set..'



/ Enter the home WiFi network's password into the pop up window.



/ Save the settings.



For more information on the Fronius Datamanager V2 please see the Operating Instructions on the Fronius website under *Solar Energy / Products / System monitoring / Datalogging /Fronius Datamanager 2.0* or click: [http://www.fronius.com/cps/rde/xbcr/SID-DBD64F5C-18F6818F/fronius\\_australia/42\\_0426\\_0191\\_EA\\_388899\\_snapshot.pdf](http://www.fronius.com/cps/rde/xbcr/SID-DBD64F5C-18F6818F/fronius_australia/42_0426_0191_EA_388899_snapshot.pdf)